



23 Queensbridge Drive, Herne Bay, Kent, CT6 8HD



COMING SOON... DETACHED OLDER STYLE PROPERTY STANDING ON A GOOD SIZE GARDEN PLOT IN A POPULAR RESIDENTIAL AREA ON THE WEST SIDE OF TOWN.... CLOSE TO THE SEA FRONT ...REQUIRES UPDATING ..NO FORWARD CHAIN... GREAT POTENTIAL... 2 BEDROOMS ...LOUNGE... DINING ROOM ..LEAN TO KITCHEN...BATHROOM/SHOWER ROOM..ATTACHED GARAGE ..PART DOUBLE GLAZED... GAS C/CH ... PLEASE CALL OR E MAIL TO DISCUSS THIS PROPERTYFREEHOLD £399,995COVID-19 VIEWING RESTRICTION IN FORCE

£399,995 Freehold



Entrance Porch

Door into

Front Reception

42'7" x 29'6" (13'2 x 9')

Radiator, Power Points, Double glazed windows, Wall Lights

Hallway

18'5 in length (5.61m in length)

Radiator, Cupboard understairs,

Side bedroom

9'2 x 10' max (2.79m x 3.05m max)

Radiator, Double glazed windows, Power points,

Lounge

14' x 14' into bay window (4.27m x 4.27m into bay window)

Radiator, Power points, Fireplace, double glazed window

Side bedroom

9'10 x 14' (3.00m x 4.27m)

Range of fitted wardrobes, Radiator, Power points, Double glazed windows,

Bathroom wc shower

10'2 x 6' (3.10m x 1.83m)

Radiator, Double glazed window, Panelled bath, Pedestal Wash basin, Low level WC, Shower cubicle,

Dining Room

9'6 x 5'9 (2.90m x 1.75m)

Radiator, Power Points door to:

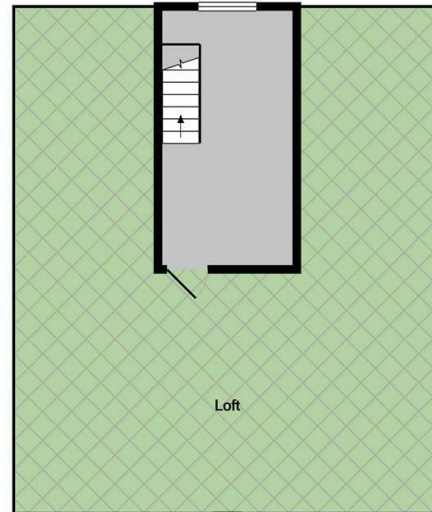
Galley style kitchen

13'4 x 5' (4.06m x 1.52m)

Stainless steel sink unit, Power points, Base units and wall cupboards, double glazed door to rear garden, Double glazed window.

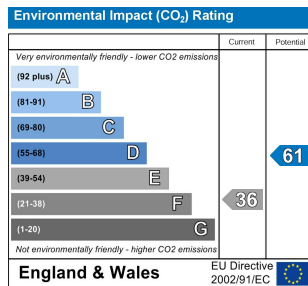
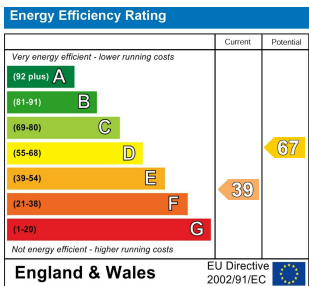


Ground Floor



1st Floor

Whilst every attempt has been made to ensure the accuracy of the floor plan contained here, measurements of doors, windows, rooms and any other items are approximate and no responsibility is taken for any error, omission, or mis-statement. This plan is for illustrative purposes only and should be used as such by any prospective purchaser. The services, systems and appliances shown have not been tested and no guarantee as to their operability or efficiency can be given
Made with Metropix ©2020



Note:

We have not tested the heating system, electrical appliances or the electric, gas and plumbing systems.

If travelling any distance to view this property it is advisable to check the availability and viewing times before hand. Wilbee & Son, as agents, cannot be held responsible for lost journey times and / or any expenses incurred.

These particulars are issued on the condition that any negotiations respecting the property are through Wilbee & Son. Every care is taken in giving particulars but should any error inadvertently occur or any property found to be previously withdrawn or disposed of, Wilbee & Son do not hold themselves responsible for any expenses or loss of time incurred. Neither the Vendor, nor the Partners or any employee of Wilbee & Son make or give any representation or warranty in relation to the property.

Oyster Financial Services is an appointed representative of Openwork Limited, which is authorised and regulated by the Financial Services Authority



